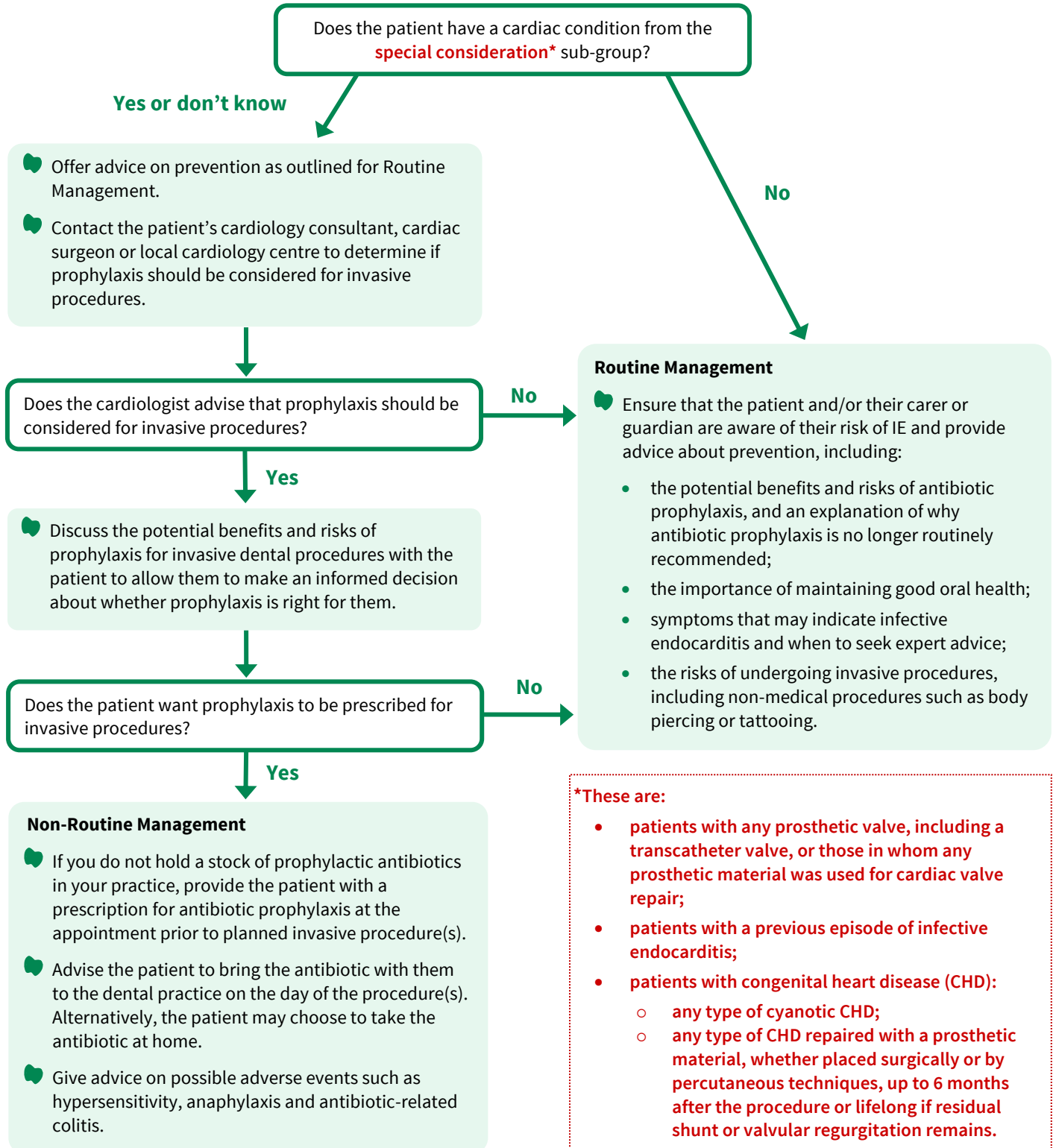


## Management of Patients at Increased Risk of Infective Endocarditis



**Ensure that any episodes of dental infection in people at increased risk of infective endocarditis are investigated and treated promptly to reduce the risk of endocarditis developing.**

◆ If an increased risk patient who is not in the special consideration sub-group expresses a desire for antibiotic prophylaxis, consider contacting the patient's cardiology consultant, cardiac surgeon or local cardiology centre for advice.