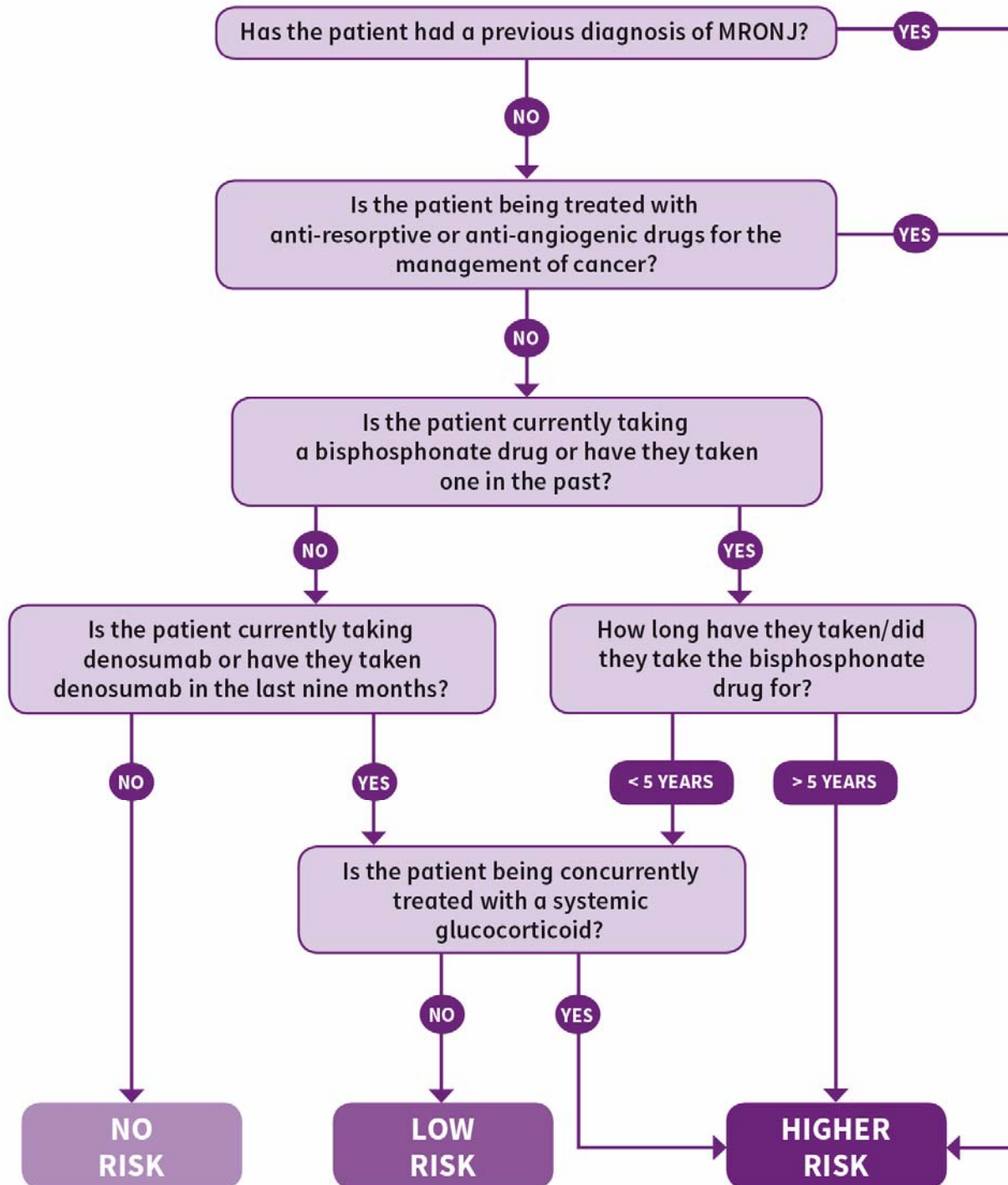


## Oral Health Management of Patients at Risk of Medication-related Osteonecrosis of the Jaw - Assessment of Patient Risk



N.B. Be aware that any low risk patient who continues to take bisphosphonate drugs after their five-year medication review should be reclassified as higher risk.

For further details of the guidance recommendations and advice on following them, refer to the full guidance, available at [www.sdcep.org.uk](http://www.sdcep.org.uk)